



**PROlite** LED Lighting™

A Division of Emergence® Lighting, Inc.

TYPE: \_\_\_\_\_ DATE: \_\_\_\_\_

JOB NAME: \_\_\_\_\_

CONTRACTOR: \_\_\_\_\_

CATALOG NO: \_\_\_\_\_

NOTES: \_\_\_\_\_

# PAVP LED SERIES

Aluminum Lighting for Marine and Wet Environments

## FEATURES

- Enclosed and Gasketed
- High lumen output in a compact luminaire
- Total Lumens: 1598
- Rugged 5/32" thick housing
- Heat Resistant, Glare-reducing frosted globe
- Field replaceable LED circuit boards and drivers with quick disconnects
- No external fins
- Standard protective guard
- Body: A360 aluminum (less than .4% copper content)
- with baked-on gray epoxy finish
- Guard: A360 aluminum (less than .4% copper content) with baked-on gray epoxy finish
- Gasket: One-piece silicone
- Lens: Borosilicate glass
- Hardware: Stainless steel
- Suitable for indoor or outdoor use
- Suitable for hose-down
- Suitable for commercial and industrial uses only
- 3/4" NPT Hubs
- Dimmable (0-10V), Dimming driver optional
- Ambient Temperature Range: -20°C to +50°C
- Standard CCT - 4000K
- Ballast Voltage: 120-277V 50/60 HZ



Designed to meet the rugged demands of highly corrosive industrial applications, the PAVP Series is vapor-tight and enclosed and gasketed fixture. It's rugged construction precludes contamination by dirt, moisture and chemicals and is suitable for indoor and outdoor applications.

## MOUNTING OPTIONS

Pendant Mount



Wall Mount



Ceiling Mount

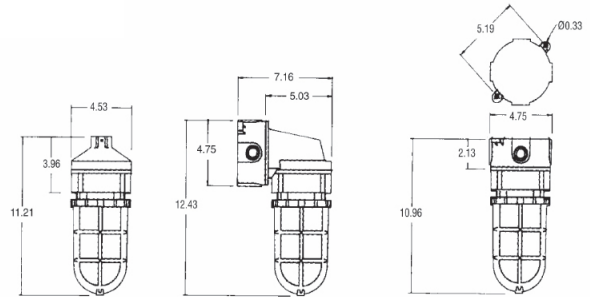


## WARRANTY & LISTINGS

- UL 1598A
- UL 1598 Wet Locations
- CUL
- UL 8750
- NEMA 3, 4 & 4X



## DIMENSIONS

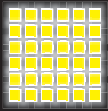


## ORDERING INFORMATION: Sample PAVP18L2-U-HF-G-C-XX

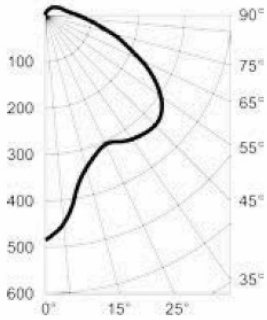
MODEL	LAMP WATTS	BALLAST VOLTAGE	GLOBE	GUARD	MOUNT	COLOR TEMP OPTIONS	SHIPPING WT.
Marine: UL 1598A, 1598 PAVP = Marine	18L2 = 18 Watt	U = 120-277V 50/60 HZ	HF = Heat Resistant Frosted Glass Globe	G = Guard	P = Pendant W = Wall Mount w/ Box C = Ceiling	30 = 3000k 35 = 3500k 50 = 5000k	4.1 4.7 5.4
Wet Locations: UL 1598 PAVPD = Wet and Damp Locations	18L2 = 18 Watt	U = 120-277V 50/60 HZ	HF = Heat Resistant Frosted Glass Globe	G = Guard	P = Pendant W = Wall Mount w/ Box C = Ceiling	30 = 3000k 35 = 3500k 50 = 5000k	4.1 4.7 5.4

215-512-8100 • Fax 267-288-5604  
421 Bustleton Pike, Feasterville, PA 19053  
www.proliteled.com

Specifications subject to change without prior notice.  
© 2016, PROlite LED Lighting, Inc. ALL RIGHTS RESERVED




## CHARTS AND PHOTOMETRIC DATA




Total Lumens	1598
Input Power (Watts)	17.9
Efficacy	89.7
CRI	82.6
CCT	4010

## ACCESSORIES

### Globe

	Type	Color	Thread Diameter	Catalog Number
	Heat Resistant Tempered Glass	Frosted	3-5/16 in.	PVGL100HRFRSTD

### Guard

	Description	Catalog Number
	Cast Aluminum Guard	P59030AMPG